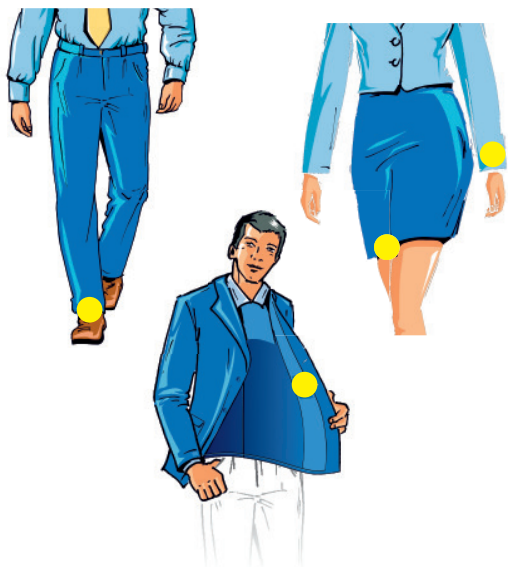


# 251

 **MAIER**

## Universal Blind Stitch Sewing Machine



### Perfection in every seam with our class 251

Discover the versatility and precision of our MAIER 251! Achieve professional results in every application!

Thanks to the innovative spring-loaded plunger, the plunger height of the MAIER 251 automatically adapts to the thickness of the fabric. For cross seams or pockets, the plunger is pressed down so that the needle only stitches the top layers of fabric. Our unique stepless adjustment of the plunger spring pressure allows you to set the machine perfectly for any type of material.

The result? No unsightly marks on the outside due to stitch-troughs or thread pulling.

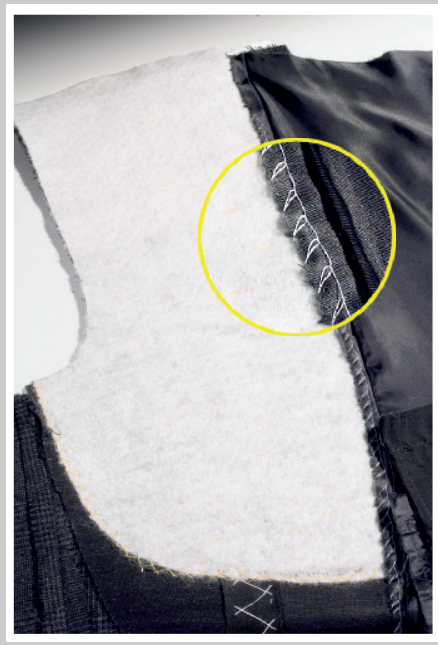
The combination of the spring-loaded plunger and the wide workspace also makes our machine ideal not only for hemming, but also for operations like attaching the lining or facing of coats and jackets.

Wide opening presser feet make handling and loading the work piece easy. With the swiveling table and a small cylinder arm, the MAIER 251 is versatile in use. The fabric guides included as standard ensure precise guidance of the material for the seam on the hem or at the fabric edge. And the integrated interval device (1:1/1:2) gives you additional flexibility for your sewing work.

### Class 251-31

There is no better choice for sewing thin fabrics than MAIER subclass -31 machines!

Perfectly fitted to the needs of sewing thin fabrics. Whether silk, chiffon or other fine fabrics - our class 251-31 delivers the best results.



## Universal Blind Stitch Sewing Machine

### Options and accessories



Top equipment makes the class 251 the ideal solution for all blind hemming applications.

#### Mounting kit for motor -46

Simple installation, compact design - the mounting kit for EFKA and Ho-Hsing motors.

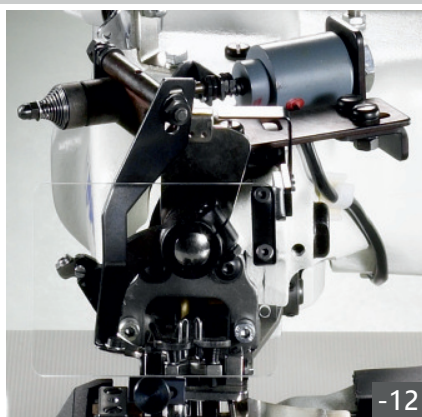


#### Digital stitch depth indicator -D

More efficient, accurate and simple - no more guessing stitch depth. The digital stitch depth display gives you precise control of your stitch depth. Reproducible settings and stepless adjustment.

#### Thread trimmer -12

Fast, safe and easy - the thread trimmer offers a high level of operating convenience and an impressive rationalization effect. Save valuable time with every seam.



#### Presserfoot lift -PFL/P

Making work easier! The pneumatic presser foot lift makes sewing much easier. Simply press the foot pedal and the presser foot lowers. You can concentrate fully on your sewing work.

#### Stitch knotting -48

No unravelling of the seam! A knot at the end of the seam prevents the seam from being unintentionally unraveled. The knot is made automatically when the thread is cut.

#### Arched swing-away table -50

The specially arched swiveling table offers improved material guidance, especially for trouser hems. If the standard table is too wide or the conventional cylinder arm does not provide enough support, this table offers optimum support and better trouser leg guidance.



#### Large add-on work support -35

The large add-on table offers the perfect solution for large-format sewing material. Whether curtains or other large-format sewing projects - with our add-on table you always have enough support surface.

#### Programmable electronic stitch depth setting -45/3

Up to 99 different stitch depth values can be stored and recalled individually or in programmed sequences using stepper motor technology. Stitch depth is easily changed using the knee switch or an automatic stitch count.

#### Vertical motion plunger -52

The vertical motion plunger ensures more accurate stitch penetration, even in thick material. Its unique design means it leaves no marks on your material.





## Universal Blind Stitch Sewing Machine

### Options and accessories

Top equipment makes the class 251 the ideal solution for all blind hemming applications.

#### Sewing light -LED

Our high-quality LED sewing light provides bright, even light directly above your sewing area. No more tedious squinting or shadow play - with our light you always have the best view of your sewing project.

#### Skip stitch device -1:3

Instead of penetration into the outer fabric layer with every stitch or every second stitch, our -1:3 option allows you to penetrate only every third stitch. The result? Fewer marks and a looser stitch.

### Subclasses

#### For velvet and velour -10

Softer springs, polished sewing tools and a rounded plunger ensure that there are no unsightly marks on your fabric. Best of all, the machine can still be used for normal sewing.

#### For thick fabric -25

The stitch plate and plunger are specially adapted for processing particularly thick, heavy material.



#### Technical Specifications

Stitch description	Single-thread chainstitch
Stitch type	103
Maximum Speed	3000 rpm
Recommended Speed	2200 rpm
Stitch length	3-8 mm, adjustable
Needle System	251EU (251LG)
Cylinder circumference	22 cm
Work width	17 cm

#### Packing dimensions head only

Carton 62x45x36 cm  
Gross 25,0 kg  
Net 21,0 kg

#### Packing dimensions complete machine

Pallet 110x58x120 cm  
Gross 66,0 kg / Net 55,0 kg  
Volume weight 117 kg