

251-40

Drapes and net curtains

 MAIER

Additional transport
with front-feed



Perfection in every seam with our class 251-40

Discover the versatility and precision of our MAIER 251-40. Achieve professional results in every application!

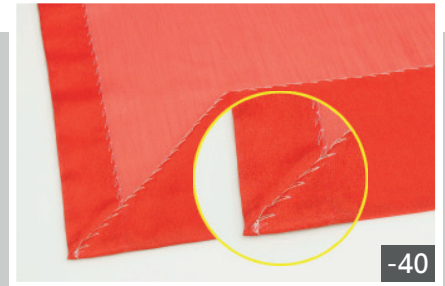
Thanks to the innovative spring-loaded plunger, the plunger height of the MAIER 251-40 automatically adapts to the thickness of the fabric. For cross seams or pockets, the plunger is pressed down so that the needle only pierces the top layers of fabric. Our unique stepless adjustment of the plunger spring pressure allows you to set the machine perfectly for any type of material.

The result? No unsightly marks on the outside due to stitch-troughs or thread pulling.

Easy handling and fabric loading thanks to the wide-opening presser feet. With the swiveling table and a small cylinder arm, the MAIER 251-40 is versatile in use. The fabric guides included as standard ensure precise guidance of the material for the seam on the hem or at the fabric edge. And the integrated interval device (1:1/1:2) gives you additional flexibility for your sewing work.

Seam start at the fabric edge - our front-feed is the solution

This feature is ideal for slit skirts, curtains, and other similar items. With the additional feed dog located in front of the needle, you can begin your seam directly at the edge of the fabric, eliminating the need for tedious reworking of the beginning of the seam. This saves time and effort.



Options and accessories

Top equipment makes the class 251-40 the ideal solution for all blind stitch applications.

Mounting kit for motor -46

Simple installation, compact design - the mounting kit for EFKA and Ho-Hsing motors.



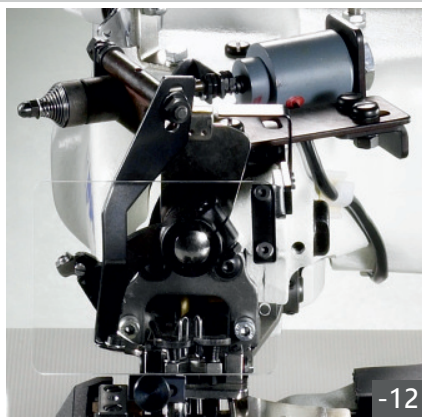
Digital stitch depth indicator -D

More efficient, accurate and simple - no more guessing stitch depth. The digital stitch depth display gives you precise control of your stitch depth. Reproducible settings and stepless adjustment.



Thread trimmer -12

Fast, safe and easy - the thread trimmer offers a high level of operating convenience and an impressive rationalization effect. Save valuable time with every seam.



Presserfoot lift -PFL/P

Making work easier! The pneumatic presser foot lift makes sewing much easier. Simply press the foot pedal and the presser foot lowers. You can concentrate fully on your sewing work.

Large add-on work support -35

The large add-on table offers the perfect solution for large-format sewing material. Whether curtains or other large-format sewing projects - with our add-on table you always have enough support surface.

Programmable electronic stitch depth setting -45/3

Up to 99 different stitch depth values can be stored and recalled individually or in programmed sequences using stepper motor technology. Stitch depth is easily changed using the knee switch or an automatic stitch count.

Vertical motion plunger -52

The vertical motion plunger ensures more accurate stitch penetration, even in thick material. Its unique design means it leaves no marks on your material.

Sewing light -LED

Our high-quality LED sewing light provides bright, even light directly above your sewing area. No more tedious squinting or shadow play - with our light you always have the best view of your sewing project.

Skip stitch device -1:3

Instead of penetration into the outer fabric layer with every stitch or every second stitch, our -1:3 option allows you to penetrate only every third stitch. The result? Fewer marks and a looser stitch.



Subclasses

For thin and hard fabrics -31

The stitch plate and plunger are specially adapted for processing thin and fine materials.

For velvet and velour -10

Softer springs, polished sewing tools and a rounded plunger ensure that there are no unsightly marks on your fabric. Best of all, the machine can still be used for normal sewing.

Technical Specifications

Stitch description	Single-thread chainstitch
Stitch type	103
Maximum Speed	3000 rpm
Recommended Speed	2200 rpm
Stitch length	3-8 mm, adjustable
Needle System	251EU
Cylinder circumference	22 cm
Work width	17 cm

Packing dimensions head only

Carton 62x45x36 cm
Gross 26,0 kg
Net 22,0 kg

Packing dimensions complete machine

Pallet 110x58x120 cm
Gross 67,0 kg / Net 56,0 kg
Volume weight 117 kg